

Compressor Technical Data

Model: EGAS100CLP

Code: 513701275

Description

Refrigerant:	R-600a	Displacement (cm ³):	13,54
Voltage:	220 V 50-60 Hz 1 ~	Lubricant Type:	ISO5
Frequency (Hz):	50	Lubricant Charge (ml):	280
Application:	LBP	Motor Type:	RSIR
HP:	1/3	Starting Torque:	LST
Efficiency:	4,70	Type of Test:	ASHRAE32
Capacity:	802,00		

Approval

IRAM

TUV

Data

External Features

	Shape	Material	Diameter (mm)
Suction Connector	Slanted	Copper	8,20
Discharge Connector	Slanted	Copper	4,94
Process Connector	Straight	Copper	6,50

Oil Cooler:	
Base Plate:	European Standard EG/F/AMEM Version 2
Tray Holder:	No
Weight (kg):	10,35

Application

Maximum ambient temperature (°C):	43
Expansion device:	Capillary
Cooling:	Static
Air flow rate:	

Mechanical Data

Bill of materials:	513701275
Starting torque:	Low Starting Torque
Bore (mm):	28,00
Stroke (mm):	11,00
Weight (kg):	10,35

Electrical Data

Motor type:	RSIR
Winding Resistance (25°C) - Start:	12,41
Winding Resistance (25°C) - Run:	15,39

Check Point - Condensing Temperature 54,4 °C

Evaporating Temperature	Cooling Capacity			Power Consumption +/- 5%	Current Consumption +/-5%	Efficiency +/-7%		
	(°C)	(kcal/h)	(W)			(Btu/h)	(W)	(A)
-23,3	203	236	804	170	1,47	1,19	1,39	4,74

Condensing Temperature 35 °C

Evaporating Temperature	Cooling Capacity			Power Consumption +/- 5%	Current Consumption +/-5%	Gas Flow Rate +/- 5%	Efficiency +/-7%		
	(°C)	(kcal/h)	(W)				(Btu/h)	(W)	(A)
-35	120	140	477	120	1,41	1,49	1,00	1,16	3,97
-30	158	183	625	134	1,42	1,96	1,18	1,37	4,68
-25	207	241	823	148	1,44	2,58	1,40	1,63	5,56
-20	270	314	1.072	163	1,47	3,37	1,65	1,92	6,57
-15	346	403	1.374	180	1,50	4,32	1,92	2,24	7,64
-10	436	507	1.731	198	1,54	5,46	2,20	2,56	8,73

Condensing Temperature 45 °C

Evaporating Temperature	Cooling Capacity			Power Consumption +/- 5%	Current Consumption +/-5%	Gas Flow Rate +/- 5%	Efficiency +/-7%		
	(°C)	(kcal/h)	(W)				(Btu/h)	(W)	(A)
-35	114	132	451	128	1,42	1,41	0,89	1,03	3,52
-30	148	172	587	142	1,43	1,84	1,04	1,21	4,13
-25	194	226	771	157	1,45	2,42	1,24	1,44	4,90
-20	253	294	1.004	173	1,48	3,16	1,46	1,70	5,80
-15	325	378	1.289	191	1,52	4,06	1,70	1,98	6,77
-10	410	477	1.627	210	1,57	5,13	1,96	2,27	7,76

Condensing Temperature 55 °C

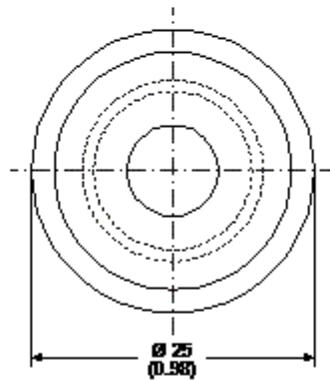
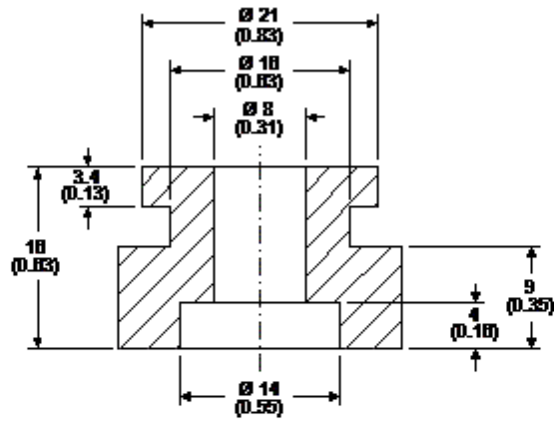
Evaporating Temperature	Cooling Capacity			Power Consumption +/- 5%	Current Consumption +/-5%	Gas Flow Rate +/- 5%	Efficiency +/-7%		
	(°C)	(kcal/h)	(W)				(Btu/h)	(W)	(A)
-35	108	126	429	132	1,42	1,34	0,82	0,96	3,26
-30	141	163	558	148	1,43	1,75	0,95	1,11	3,78
-25	184	215	732	164	1,46	2,30	1,12	1,31	4,46
-20	240	280	954	182	1,50	3,00	1,32	1,54	5,24
-15	309	359	1.226	201	1,54	3,86	1,53	1,78	6,09
-10	390	454	1.549	222	1,60	4,89	1,76	2,04	6,97

Dimensions

Rubber Grommet

Engineering Code	13146411
Dimensions	mm (Inch)

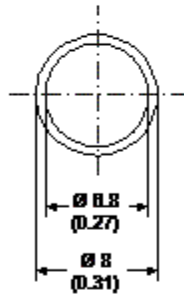
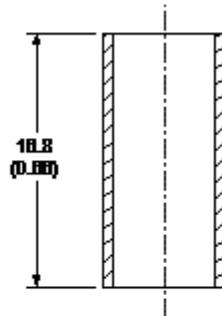
The grommets are made of special rubber and used in the nut and bolt type or in the snap on type assembly. The rubber grommet, the dimensions of which are shown in the figure below, was developed for installation in compressors with 16 and 19 mm diameters holes in the base plate.



Metal Bushing

Engineering Code	13126755
Dimensions	mm (Inch)

As an optional assembly accessory, Embraco can supply metal bushings, the purpose of which is to limit tightening of the screws upon attachment of the compressor assembly to the refrigeration system. This bushing is made of steel in the dimensions shown in the figure below, and comes with an anti-rust coating of chromated zinc.



Accessories