

Compressor Technical Data

Model: EM55NP
Code: 513302282

Description

Refrigerant:	Blend	Displacement (cm ³):	4,99
Voltage:	220-240 V 50 Hz 1 ~	Lubricant Type:	ISO32
Frequency (Hz):	50	Lubricant Charge (ml):	160
Application:	LBP	Motor Type:	RSIR
HP:	1/6	Starting Torque:	LST
Efficiency:	3,73	Type of Test:	ASHRAE32
Capacity:	470,00		

Approval

IRAM

Data

External Features

	Shape	Material	Diameter (mm)
Suction Connector	Straight	Copper	6,10
Discharge Connector	Slanted	Copper	4,94
Process Connector	Straight	Copper	6,10

Oil Cooler:	
Base Plate:	Universal EG/F/AMEM version 2
Tray Holder:	Yes
Weight (kg):	6,96

Application

Maximum ambient temperature (°C):	43
Expansion device:	Capillary
Cooling:	Static
Air flow rate:	

Mechanical Data

Bill of materials:	513302282
Starting torque:	Low Starting Torque
Bore (mm):	21,00
Stroke (mm):	7,20
Weight (kg):	6,96

Electrical Data

Motor type:	RSIR
Winding Resistance (25°C) - Start:	21,50
Winding Resistance (25°C) - Run:	27,50

Check Point - Condensing Temperature 54,4 °C

Evaporating Temperature	Cooling Capacity			Power Consumption +/- 5%	Current Consumption +/-5%	Efficiency +/-7%		
	(°C)	(kcal/h)	(W)			(Btu/h)	(W)	(A)
-23,3	118	137	467	126	0,82	0,93	1,08	3,70

Condensing Temperature 45 °C

Evaporating Temperature	Cooling Capacity			Power Consumption +/- 5%	Current Consumption +/-5%	Gas Flow Rate +/- 5%	Efficiency +/-7%		
	(°C)	(kcal/h)	(W)				(Btu/h)	(W)	(A)
-35	67	78	267	87	0,73	1,95	0,78	0,90	3,08
-30	91	105	359	105	0,75	2,62	0,86	1,00	3,42
-25	120	140	477	121	0,80	3,49	0,99	1,15	3,94
-20	156	181	619	136	0,88	4,53	1,15	1,33	4,55
-15	197	229	783	151	0,96	5,75	1,30	1,52	5,18
-10	244	284	968	168	1,04	7,14	1,45	1,69	5,77

Condensing Temperature 55 °C

Evaporating Temperature	Cooling Capacity			Power Consumption +/- 5%	Current Consumption +/-5%	Gas Flow Rate +/- 5%	Efficiency +/-7%		
	(°C)	(kcal/h)	(W)				(Btu/h)	(W)	(A)
-35	60	70	240	87	0,73	1,75	0,70	0,81	2,77
-30	80	93	318	105	0,75	2,32	0,76	0,89	3,03
-25	106	124	422	121	0,80	3,09	0,88	1,02	3,49
-20	139	162	552	136	0,88	4,05	1,02	1,19	4,06
-15	178	207	705	151	0,96	5,18	1,18	1,37	4,66
-10	222	258	881	168	1,04	6,50	1,32	1,54	5,24

Condensing Temperature 65 °C

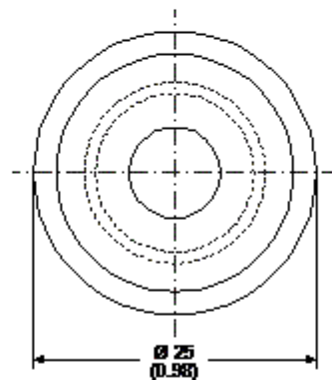
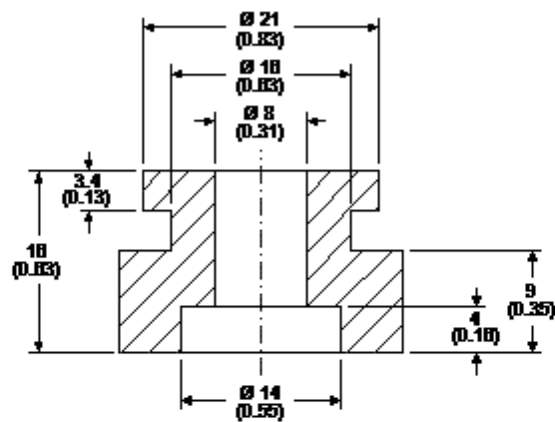
Evaporating Temperature	Cooling Capacity			Power Consumption +/- 5%	Current Consumption +/-5%	Gas Flow Rate +/- 5%	Efficiency +/-7%		
	(°C)	(kcal/h)	(W)				(Btu/h)	(W)	(A)
-35	49	57	194	87	0,73	1,41	0,56	0,66	2,24
-30	69	80	274	105	0,75	2,00	0,66	0,77	2,61
-25	96	112	382	121	0,80	2,79	0,80	0,93	3,16
-20	130	151	516	136	0,88	3,78	0,96	1,11	3,80
-15	170	198	675	151	0,96	4,96	1,12	1,31	4,46
-10	216	251	857	168	1,04	6,32	1,29	1,49	5,10

Dimensions

Rubber Grommet

Engineering Code	13146411
Dimensions	mm (Inch)

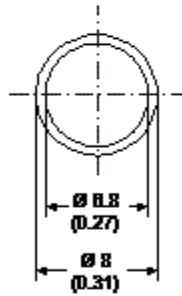
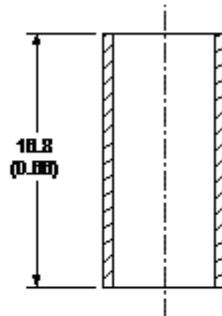
The grommets are made of special rubber and used in the nut and bolt type or in the snap on type assembly. The rubber grommet, the dimensions of which are shown in the figure below, was developed for installation in compressors with 16 and 19 mm diameters holes in the base plate.



Metal Bushing

Engineering Code	13126755
Dimensions	mm (Inch)

As an optional assembly accessory, Embraco can supply metal bushings, the purpose of which is to limit tightening of the screws upon attachment of the compressor assembly to the refrigeration system. This bushing is made of steel in the dimensions shown in the figure below, and comes with an anti-rust coating of chromated zinc.



Accessories