

Compressor Technical Data

Model: EM60HNP

Code: 513302495

Description

Refrigerant:	R-134a	Displacement (cm ³):	5,54
Voltage:	220-240 V 50 Hz 1 ~	Lubricant Type:	ISO22
Frequency (Hz):	50	Lubricant Charge (ml):	160
Application:	LBP	Motor Type:	RSIR
HP:	1/6	Starting Torque:	LST
Efficiency:	3,94	Type of Test:	ASHRAE32
Capacity:	485,00		

Approval

CCC

VDE

Data

External Features

	Shape	Material	Diameter (mm)
Suction Connector	Straight	Copper	6,10
Discharge Connector	Slanted	Copper	4,94
Process Connector	Straight	Copper	6,10

Oil Cooler:	
Base Plate:	European Standard EG/F/AMEM Version 2
Tray Holder:	Yes
Weight (kg):	7,54

Application

Maximum ambient temperature (°C):	43
Expansion device:	Capillary
Cooling:	Static
Air flow rate:	

Mechanical Data

Bill of materials:	513302495
Starting torque:	Low Starting Torque
Bore (mm):	21,00
Stroke (mm):	8,00
Weight (kg):	7,54

Electrical Data

Motor type:	RSIR
Winding Resistance (25°C) - Start:	16,90
Winding Resistance (25°C) - Run:	32,60

Check Point - Condensing Temperature 54,4 °C

Evaporating Temperature	Cooling Capacity			Power Consumption +/- 5%	Current Consumption +/-5%	Efficiency +/-7%		
	(°C)	(kcal/h)	(W)			(Btu/h)	(W)	(A)
-23,3	123	143	489	121	0,89	1,01	1,18	4,03

Condensing Temperature 45 °C

Evaporating Temperature	Cooling Capacity			Power Consumption +/- 5%	Current Consumption +/-5%	Gas Flow Rate +/- 5%	Efficiency +/-7%		
	(°C)	(kcal/h)	(W)				(Btu/h)	(W)	(A)
-35	62	72	246	89	0,82	1,39	0,69	0,81	2,75
-30	88	103	350	103	0,84	1,98	0,85	0,99	3,39
-25	122	142	484	118	0,87	2,75	1,04	1,21	4,12
-20	164	190	649	132	0,91	3,69	1,24	1,44	4,90
-15	213	247	844	148	0,96	4,82	1,44	1,67	5,71
-10	270	314	1.071	164	1,01	6,13	1,64	1,91	6,52

Condensing Temperature 55 °C

Evaporating Temperature	Cooling Capacity			Power Consumption +/- 5%	Current Consumption +/-5%	Gas Flow Rate +/- 5%	Efficiency +/-7%		
	(°C)	(kcal/h)	(W)				(Btu/h)	(W)	(A)
-35	49	57	196	85	0,81	1,11	0,58	0,68	2,31
-30	76	88	301	100	0,83	1,70	0,76	0,88	3,01
-25	109	127	434	116	0,87	2,46	0,94	1,10	3,75
-20	150	175	596	133	0,92	3,39	1,13	1,32	4,49
-15	198	230	786	151	0,98	4,49	1,32	1,53	5,22
-10	254	295	1.007	170	1,04	5,77	1,50	1,74	5,93

Condensing Temperature 65 °C

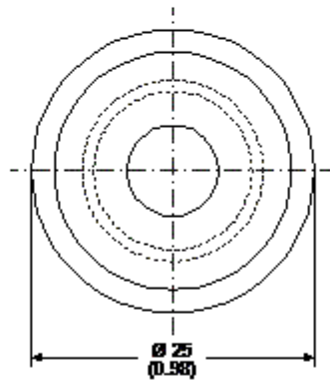
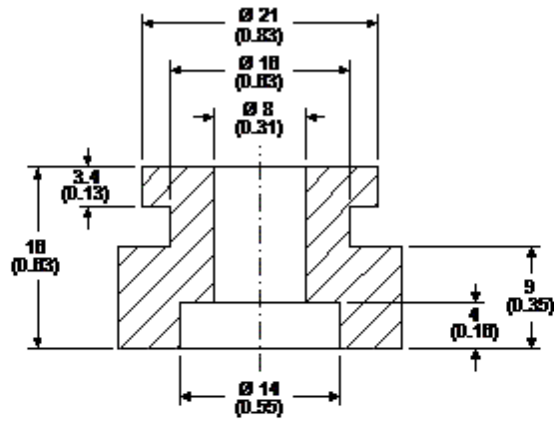
Evaporating Temperature	Cooling Capacity			Power Consumption +/- 5%	Current Consumption +/-5%	Gas Flow Rate +/- 5%	Efficiency +/-7%		
	(°C)	(kcal/h)	(W)				(Btu/h)	(W)	(A)
-35	34	39	135	79	0,79	0,76	0,43	0,50	1,70
-30	61	71	241	96	0,82	1,37	0,63	0,73	2,50
-25	94	110	374	115	0,87	2,12	0,82	0,95	3,26
-20	134	156	534	134	0,93	3,04	1,00	1,16	3,97
-15	182	211	721	156	1,00	4,11	1,17	1,36	4,63
-10	236	274	936	178	1,08	5,36	1,32	1,54	5,25

Dimensions

Rubber Grommet

Engineering Code	13146411
Dimensions	mm (Inch)

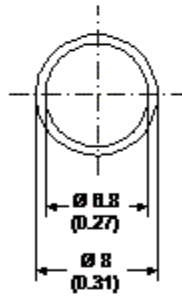
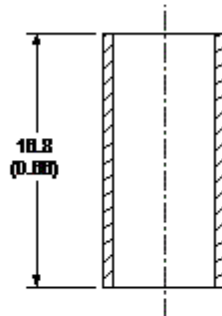
The grommets are made of special rubber and used in the nut and bolt type or in the snap on type assembly. The rubber grommet, the dimensions of which are shown in the figure below, was developed for installation in compressors with 16 and 19 mm diameters holes in the base plate.



Metal Bushing

Engineering Code	13126755
Dimensions	mm (Inch)

As an optional assembly accessory, Embraco can supply metal bushings, the purpose of which is to limit tightening of the screws upon attachment of the compressor assembly to the refrigeration system. This bushing is made of steel in the dimensions shown in the figure below, and comes with an anti-rust coating of chromated zinc.



Accessories