

Compressor Technical Data

Model: VEMY3H
Code: 513900026

Description

Refrigerant:	R-134a	Displacement (cm ³):	3
Voltage:	230 V 53-150 Hz 3 ~	Lubricant Type:	ISO10
Rotation (RPM):	1600	Lubricant Charge (ml):	220
Application:	LBP	Motor Type:	BPM
HP:	1/10	Starting Torque:	LST
Efficiency:	4,96	Type of Test:	ASHRAE32
Capacity:	139,00		

Approval

TUV

UL

Data

External Features

	Shape	Material	Diameter (mm)
Suction Connector	Straight	Copper	8,20
Discharge Connector	Straight	Copper	4,94
Process Connector	Straight	Copper	6,50

Oil Cooler:	
Base Plate:	Universal EUEM
Tray Holder:	No
Weight (kg):	7,50

Application

Maximum ambient temperature (°C):	43
Expansion device:	Capillary
Cooling:	Static
Air flow rate:	

Mechanical Data

Bill of materials:	513900026
Starting torque:	Low Starting Torque
Bore (mm):	19,00
Stroke (mm):	5,30
Weight (kg):	7,50

Electrical Data

Motor type:	BPM
Winding Resistance (25°C) - Start:	16,07
Winding Resistance (25°C) - Run:	16,07

Check Point - Condensing Temperature 54,4 °C

Evaporating Temperature	Cooling Capacity			Power Consumption +/- 5%	Current Consumption +/-5%	Efficiency +/-7%		
	(°C)	(kcal/h)	(W)			(Btu/h)	(W)	(A)
-23,3	34	40	136	28	0,43	1,22	1,42	4,84

Condensing Temperature 35 °C

Evaporating Temperature	Cooling Capacity			Power Consumption +/- 5%	Current Consumption +/-5%	Gas Flow Rate +/- 5%	Efficiency +/-7%		
	(°C)	(kcal/h)	(W)				(Btu/h)	(W)	(A)
-35	23	26	90	18	0,31	0,51	1,23	1,43	4,86
-30	30	35	118	21	0,34	0,67	1,39	1,62	5,53
-25	38	45	152	25	0,39	0,87	1,57	1,82	6,22
-20	50	58	197	28	0,44	1,12	1,80	2,09	7,14
-15	65	75	258	31	0,49	1,47	2,12	2,47	8,43
-10	85	99	339	33	0,53	1,94	2,57	2,99	10,19

Condensing Temperature 45 °C

Evaporating Temperature	Cooling Capacity			Power Consumption +/- 5%	Current Consumption +/-5%	Gas Flow Rate +/- 5%	Efficiency +/-7%		
	(°C)	(kcal/h)	(W)				(Btu/h)	(W)	(A)
-35	18	21	70	19	0,32	0,40	0,95	1,11	3,79
-30	26	31	105	22	0,35	0,59	1,19	1,39	4,74
-25	36	42	144	26	0,41	0,82	1,40	1,62	5,54
-20	48	56	192	30	0,47	1,09	1,62	1,88	6,43
-15	64	75	254	34	0,53	1,45	1,90	2,21	7,54
-10	85	99	336	38	0,58	1,93	2,26	2,63	8,97

Condensing Temperature 55 °C

Evaporating Temperature	Cooling Capacity			Power Consumption +/- 5%	Current Consumption +/-5%	Gas Flow Rate +/- 5%	Efficiency +/-7%		
	(°C)	(kcal/h)	(W)				(Btu/h)	(W)	(A)
-35	12	14	48	18	0,29	0,27	0,67	0,78	2,68
-30	21	24	82	22	0,34	0,47	0,94	1,10	3,74
-25	30	35	120	27	0,41	0,68	1,14	1,32	4,51
-20	42	49	166	31	0,48	0,94	1,33	1,54	5,27
-15	57	66	225	36	0,55	1,28	1,55	1,81	6,17
-10	76	89	302	41	0,62	1,73	1,84	2,14	7,29

Dimensions

Compressor Housing

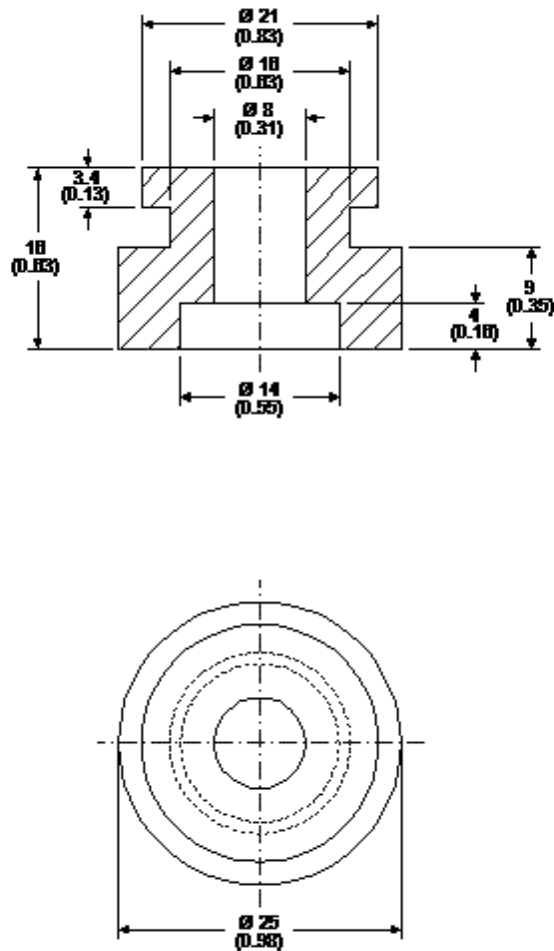
	mm	inch		mm	inch		mm	inch		mm	inch
A	166,00	6,54	Rb	---	---	Sa	78,00	3,07	Rc	---	---
B	---	---	F	---	---	Pa	76,00	2,99	G1	---	---
C	1.546,00	60,87	G	---	---	Da	57,00	2,24	F2	170,00	6,69
E	---	---	F1	165,00	6,50	Ra	---	---	N	---	---
Sb	904,00	35,59	T	---	---	Sc	725,00	28,54	L	200,00	7,87
Pb	873,00	34,37	M	---	---	Pc	685,00	26,97	H	---	---
Db	1.109,00	43,66	J	---	---	Dc	386,00	15,20	H1	---	---

1 - Suction Connector 2 - Discharge Connector 3 - Process Connector 4 - Earthing Terminal 5 - Inverter o

Rubber Grommet

Engineering Code	13146411
Dimensions	mm (Inch)

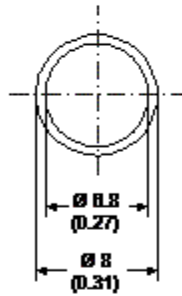
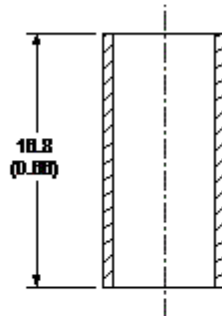
The grommets are made of special rubber and used in the nut and bolt type or in the snap on type assembly. The rummer grommet, the dimensions of which are shown in the figure below, was developed for installation in compressors with 16 and 19 mm diameters holes in the base plate.



Metal Bushing

Engineering Code	13126755
Dimensions	mm (Inch)

As an optional assembly accessory, Embraco can supply metal bushings, the purpose of which is to limit tightening of the screws upon attachment of the compressor assembly to the refrigeration system. This bushing is made of steel in the dimensions shown in the figure below, and comes with an anti-rust coating of chromated zinc.



Accessories