

Compressor Technical Data

Model: EMT2117U

Code: 872CA62

Description

Refrigerant:	R-290	Displacement (cm ³):	4,5
Voltage:	220-240 V 50 Hz 1 ~	Lubricant Type:	ISO22
Frequency (Hz):	50	Lubricant Charge (ml):	180
Application:	LBP	Motor Type:	CSIR
HP:	1/5	Starting Torque:	HST
Efficiency:	4,72	Type of Test:	ASHRAE32
Capacity:	712,00		

Approval

VDE

Data

External Features

	Shape	Material	Diameter (mm)
Suction Connector	Slanted 42°	Copper	6,10
Discharge Connector	Straight	Copper	4,94
Process Connector	Slanted 42°	Copper	6,10

Oil Cooler:	
Base Plate:	European Standard
Tray Holder:	No
Weight (kg):	7,80

Application

Maximum ambient temperature (°C):	43
Expansion device:	Capillary/ Valve
Cooling:	Static
Air flow rate:	

Mechanical Data

Bill of materials:	872CA62
Starting torque:	High Starting Torque
Bore (mm):	21,00
Stroke (mm):	6,50
Weight (kg):	7,80

Electrical Data

Motor type:	CSIR
Winding Resistance (25°C) - Start:	0,00
Winding Resistance (25°C) - Run:	0,00

Check Point - Condensing Temperature 54,4 °C

Evaporating Temperature	Cooling Capacity			Power Consumption +/- 5%	Current Consumption +/-5%	Efficiency +/-7%		
	(°C)	(kcal/h)	(W)			(Btu/h)	(W)	(A)
-23,3	178	207	706	149	1,01	1,19	1,39	4,74

Condensing Temperature 35 °C

Evaporating Temperature	Cooling Capacity			Power Consumption +/- 5%	Current Consumption +/-5%	Gas Flow Rate +/- 5%	Efficiency +/-7%		
	(°C)	(kcal/h)	(W)				(Btu/h)	(W)	(A)
-40	91	106	361	97	0,89	1,07	0,94	1,09	3,72
-35	118	137	467	107	0,90	1,38	1,10	1,28	4,36
-30	150	174	594	118	0,92	1,76	1,27	1,48	5,05
-25	188	218	745	128	0,94	2,22	1,46	1,70	5,81
-20	233	270	923	138	0,97	2,75	1,68	1,96	6,68
-15	285	332	1.131	147	1,00	3,39	1,94	2,26	7,71
-10	346	402	1.373	153	1,04	4,13	2,26	2,63	8,97

Condensing Temperature 45 °C

Evaporating Temperature	Cooling Capacity			Power Consumption +/- 5%	Current Consumption +/-5%	Gas Flow Rate +/- 5%	Efficiency +/-7%		
	(°C)	(kcal/h)	(W)				(Btu/h)	(W)	(A)
-40	80	93	318	100	0,90	0,94	0,80	0,93	3,19
-35	107	124	424	111	0,92	1,26	0,96	1,12	3,81
-30	139	161	550	124	0,94	1,63	1,12	1,30	4,44
-25	176	204	698	137	0,97	2,07	1,29	1,50	5,10
-20	220	255	871	149	1,01	2,60	1,47	1,71	5,84
-15	271	315	1.074	161	1,05	3,22	1,68	1,96	6,67
-10	330	383	1.308	171	1,09	3,94	1,93	2,24	7,65

Condensing Temperature 55 °C

Evaporating Temperature	Cooling Capacity			Power Consumption +/- 5%	Current Consumption +/-5%	Gas Flow Rate +/- 5%	Efficiency +/-7%		
	(°C)	(kcal/h)	(W)				(Btu/h)	(W)	(A)
-40	68	79	270	99	0,89	0,80	0,69	0,80	2,72
-35	95	110	377	113	0,92	1,12	0,84	0,98	3,34
-30	127	147	502	128	0,96	1,49	0,99	1,15	3,92
-25	163	190	648	144	1,00	1,93	1,13	1,32	4,50
-20	206	240	818	160	1,04	2,44	1,29	1,50	5,11

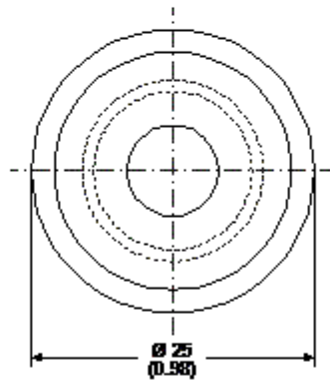
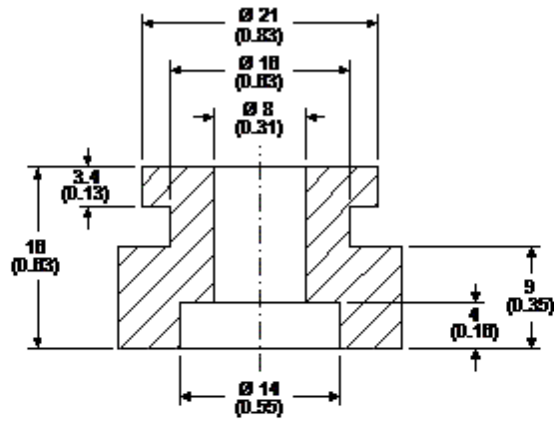
-15	256	298	1.016	176	1,09	3,04	1,46	1,69	5,78
-10	313	365	1.244	190	1,15	3,74	1,65	1,92	6,54

Dimensions

Rubber Grommet

Engineering Code	13146411
Dimensions	mm (Inch)

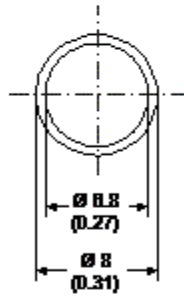
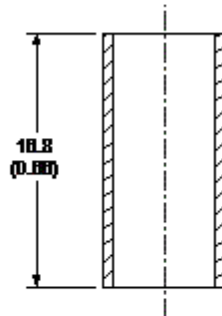
The grommets are made of special rubber and used in the nut and bolt type or in the snap on type assembly. The rubber grommet, the dimensions of which are shown in the figure below, was developed for installation in compressors with 16 and 19 mm diameters holes in the base plate.



Metal Bushing

Engineering Code	13126755
Dimensions	mm (Inch)

As an optional assembly accessory, Embraco can supply metal bushings, the purpose of which is to limit tightening of the screws upon attachment of the compressor assembly to the refrigeration system. This bushing is made of steel in the dimensions shown in the figure below, and comes with an anti-rust coating of chromated zinc.



Accessories