

Compressor Technical Data

Model: T2155E
Code: 116BA23

Description

Refrigerant:	R-22	Displacement (cm ³):	17,39
Voltage:	220-240 V 50 Hz 1 ~	Lubricant Type:	ISO46
Frequency (Hz):	50	Lubricant Charge (ml):	550
Application:	LBP	Motor Type:	CSCR
HP:	1/2+	Starting Torque:	HST
Efficiency:	4,23	Type of Test:	ASHRAE32
Capacity:	2048,00		

Approval

Data

External Features

	Shape	Material	Diameter (mm)
Suction Connector	Vertical	Copper	9,60
Discharge Connector	Vertical	Copper	6,42
Process Connector	Vertical	Copper	9,60

Oil Cooler:	
Base Plate:	European Standard
Tray Holder:	No
Weight (kg):	16,28

Application

Maximum ambient temperature (°C):	43
Expansion device:	Capillary/ Valve
Cooling:	Fan Cooling
Air flow rate:	

Mechanical Data

Bill of materials:	116BA23
Starting torque:	High Starting Torque
Bore (mm):	34,12
Stroke (mm):	9,52
Weight (kg):	16,28

Electrical Data

Motor type:	CSCR
Winding Resistance (25°C) - Start:	4,10
Winding Resistance (25°C) - Run:	9,15

Check Point - Condensing Temperature 54,4 °C

Evaporating Temperature	Cooling Capacity			Power Consumption +/- 5%	Current Consumption +/-5%	Efficiency +/-7%		
	(°C)	(kcal/h)	(W)			(Btu/h)	(W)	(A)
-23,3	519	604	2.060	483	2,18	1,07	1,25	4,26

Condensing Temperature 35 °C

Evaporating Temperature	Cooling Capacity			Power Consumption +/- 5%	Current Consumption +/-5%	Gas Flow Rate +/- 5%	Efficiency +/-7%		
	(°C)	(kcal/h)	(W)				(Btu/h)	(W)	(A)
-30	404	470	1.604	366	1,77	8,73	1,10	1,28	4,38
-25	557	648	2.210	427	2,03	12,06	1,30	1,52	5,18
-20	749	871	2.972	494	2,31	16,27	1,52	1,76	6,02
-15	980	1.140	3.890	568	2,61	21,38	1,73	2,01	6,85
-10	1.251	1.455	4.964	650	2,94	27,40	1,92	2,24	7,64

Condensing Temperature 45 °C

Evaporating Temperature	Cooling Capacity			Power Consumption +/- 5%	Current Consumption +/-5%	Gas Flow Rate +/- 5%	Efficiency +/-7%		
	(°C)	(kcal/h)	(W)				(Btu/h)	(W)	(A)
-30	368	428	1.460	379	1,78	7,95	0,97	1,13	3,85
-25	509	592	2.021	443	2,05	11,03	1,15	1,34	4,56
-20	688	800	2.731	515	2,37	14,95	1,34	1,55	5,30
-15	905	1.052	3.590	596	2,72	19,73	1,52	1,77	6,02
-10	1.158	1.347	4.597	686	3,12	25,37	1,69	1,96	6,70

Condensing Temperature 55 °C

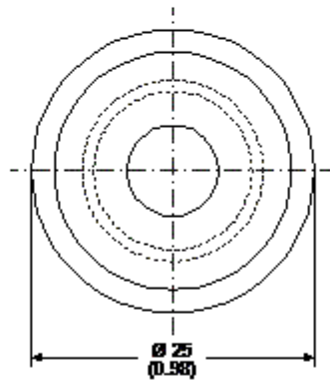
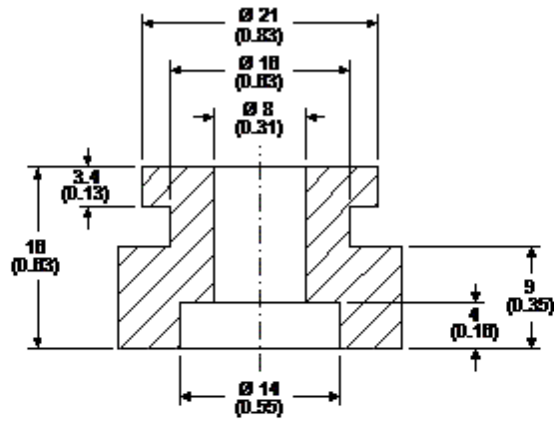
Evaporating Temperature	Cooling Capacity			Power Consumption +/- 5%	Current Consumption +/-5%	Gas Flow Rate +/- 5%	Efficiency +/-7%		
	(°C)	(kcal/h)	(W)				(Btu/h)	(W)	(A)
-30	333	387	1.322	391	1,78	7,19	0,85	0,99	3,38
-25	464	539	1.840	459	2,07	10,04	1,01	1,18	4,01
-20	630	733	2.500	536	2,42	13,68	1,18	1,37	4,66
-15	832	967	3.301	623	2,83	18,14	1,34	1,55	5,30
-10	1.069	1.244	4.244	720	3,29	23,42	1,49	1,73	5,89

Dimensions

Rubber Grommet

Engineering Code	13146411
Dimensions	mm (Inch)

The grommets are made of special rubber and used in the nut and bolt type or in the snap on type assembly. The rubber grommet, the dimensions of which are shown in the figure below, was developed for installation in compressors with 16 and 19 mm diameters holes in the base plate.



Accessories