

Compressor Technical Data

Model: T2168E
Code: 116UD23

Description

Refrigerant:	R-22	Displacement (cm ³):	20,44
Voltage:	208-230 V 60 Hz 1~	Lubricant Type:	ISO46
Frequency (Hz):	50	Lubricant Charge (ml):	550
Application:	LBP	Motor Type:	CSCR
HP:	3/4	Starting Torque:	HST
Efficiency:	4,02	Type of Test:	ASHRAE32
Capacity:	2597,00		

Approval

UL

Data

External Features

	Shape	Material	Diameter (mm)
Suction Connector	Vertical	Copper	9,60
Discharge Connector	Vertical	Copper	6,42
Process Connector	Vertical	Copper	9,60

Oil Cooler:	
Base Plate:	European Standard
Tray Holder:	No
Weight (kg):	16,70

Application

Maximum ambient temperature (°C):	43
Expansion device:	Capillary/ Valve
Cooling:	Fan Cooling
Air flow rate:	

Mechanical Data

Bill of materials:	116UD23
Starting torque:	High Starting Torque
Bore (mm):	36,99
Stroke (mm):	9,52
Weight (kg):	16,70

Electrical Data

Motor type:	CSCR
Winding Resistance (25°C) - Start:	2,04
Winding Resistance (25°C) - Run:	6,00

Check Point - Condensing Temperature 54,4 °C

Evaporating Temperature	Cooling Capacity			Power Consumption +/- 5%	Current Consumption +/-5%	Efficiency +/-7%		
	(°C)	(kcal/h)	(W)			(Btu/h)	(W)	(A)
-23,3	656	762	2.601	643	3,60	1,02	1,19	4,04

Condensing Temperature 35 °C

Evaporating Temperature	Cooling Capacity			Power Consumption +/- 5%	Current Consumption +/-5%	Gas Flow Rate +/- 5%	Efficiency +/-7%		
	(°C)	(kcal/h)	(W)				(Btu/h)	(W)	(A)
-30	498	580	1.977	442	2,55	10,77	1,13	1,31	4,47
-25	657	764	2.606	528	3,02	14,22	1,24	1,45	4,93
-20	882	1.025	3.498	632	3,58	19,15	1,39	1,62	5,54
-15	1.173	1.365	4.656	754	4,24	25,59	1,56	1,81	6,18
-10	1.532	1.782	6.079	894	4,98	33,55	1,71	1,99	6,80

Condensing Temperature 45 °C

Evaporating Temperature	Cooling Capacity			Power Consumption +/- 5%	Current Consumption +/-5%	Gas Flow Rate +/- 5%	Efficiency +/-7%		
	(°C)	(kcal/h)	(W)				(Btu/h)	(W)	(A)
-30	472	549	1.872	473	2,69	10,19	1,00	1,16	3,96
-25	625	726	2.479	568	3,21	13,53	1,10	1,28	4,37
-20	830	965	3.294	682	3,83	18,03	1,22	1,41	4,83
-15	1.088	1.265	4.317	817	4,55	23,72	1,33	1,55	5,28
-10	1.398	1.626	5.549	972	5,38	30,62	1,44	1,67	5,71

Condensing Temperature 55 °C

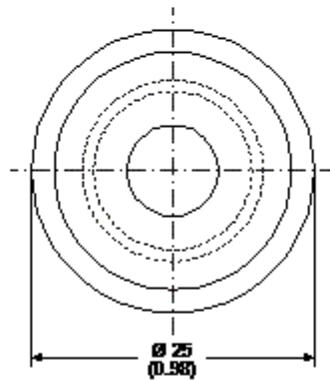
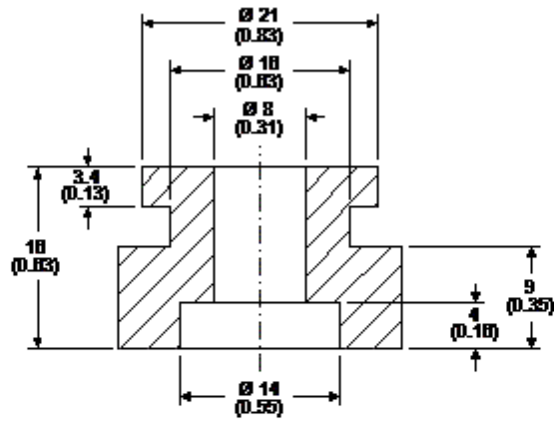
Evaporating Temperature	Cooling Capacity			Power Consumption +/- 5%	Current Consumption +/-5%	Gas Flow Rate +/- 5%	Efficiency +/-7%		
	(°C)	(kcal/h)	(W)				(Btu/h)	(W)	(A)
-30	445	518	1.768	503	2,82	9,62	0,89	1,03	3,51
-25	594	691	2.358	606	3,39	12,87	0,98	1,14	3,89
-20	781	908	3.099	731	4,07	16,96	1,07	1,24	4,24
-15	1.006	1.170	3.992	878	4,86	21,93	1,15	1,33	4,55
-10	1.269	1.476	5.037	1.047	5,77	27,79	1,21	1,41	4,81

Dimensions

Rubber Grommet

Engineering Code	13146411
Dimensions	mm (Inch)

The grommets are made of special rubber and used in the nut and bolt type or in the snap on type assembly. The rubber grommet, the dimensions of which are shown in the figure below, was developed for installation in compressors with 16 and 19 mm diameters holes in the base plate.



Accessories