

Compressor Technical Data

Model: T7223F
Code: 116DA01

Description

Refrigerant:	R-22	Displacement (cm ³):	20,44
Voltage:	220-240 V 50 Hz 1 ~	Lubricant Type:	ISO32
Frequency (Hz):	50	Lubricant Charge (ml):	550
Application:	AC	Motor Type:	RSCR
HP:	1-	Starting Torque:	LST
Efficiency:	7,06	Type of Test:	ASHRAE46
Capacity:	9161,00		

Approval

Data

External Features

	Shape	Material	Diameter (mm)
Suction Connector	Vertical	Copper	9,60
Discharge Connector	Vertical	Copper	6,42
Process Connector	Vertical	Copper	9,60

Oil Cooler:	
Base Plate:	European Standard
Tray Holder:	No
Weight (kg):	15,60

Application

Maximum ambient temperature (°C):	43
Expansion device:	Capillary
Cooling:	Fan Cooling
Air flow rate:	

Mechanical Data

Bill of materials:	116DA01
Starting torque:	Low Starting Torque
Bore (mm):	36,99
Stroke (mm):	9,52
Weight (kg):	15,60

Electrical Data

Motor type:	RSCR
Winding Resistance (25°C) - Start:	2,85
Winding Resistance (25°C) - Run:	12,81

Check Point - Condensing Temperature 54,4 °C

Evaporating Temperature	Cooling Capacity			Power Consumption +/- 5%	Current Consumption +/-5%	Efficiency +/-7%		
	(°C)	(kcal/h)	(W)			(Btu/h)	(W)	(A)
7,2	2.327	2.706	9.234	1.289	6,07	1,81	2,10	7,17

Condensing Temperature 35 °C

Evaporating Temperature	Cooling Capacity			Power Consumption +/- 5%	Current Consumption +/-5%	Gas Flow Rate +/- 5%	Efficiency +/-7%		
	(°C)	(kcal/h)	(W)				(Btu/h)	(W)	(A)
0	2.222	2.584	8.819	915	5,00	-	2,43	2,82	9,64
5	2.659	3.092	10.551	997	5,29	-	2,67	3,10	10,58
10	3.245	3.774	12.878	1.059	5,53	-	3,06	3,56	12,16
15	3.980	4.629	15.796	1.101	5,72	-	3,62	4,20	14,35

Condensing Temperature 45 °C

Evaporating Temperature	Cooling Capacity			Power Consumption +/- 5%	Current Consumption +/-5%	Gas Flow Rate +/- 5%	Efficiency +/-7%		
	(°C)	(kcal/h)	(W)				(Btu/h)	(W)	(A)
0	1.955	2.274	7.759	1.011	5,28	-	1,93	2,25	7,68
5	2.387	2.776	9.472	1.119	5,61	-	2,13	2,48	8,46
10	2.923	3.399	11.599	1.202	5,88	-	2,43	2,83	9,65
15	3.563	4.144	14.139	1.259	6,09	-	2,83	3,29	11,23

Condensing Temperature 55 °C

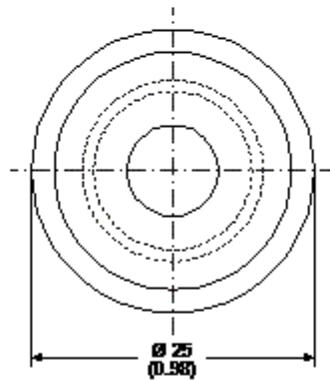
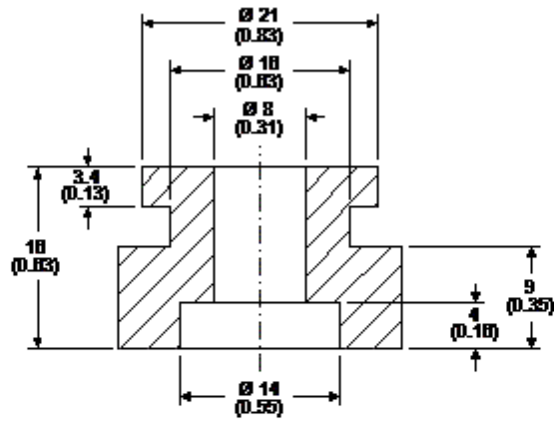
Evaporating Temperature	Cooling Capacity			Power Consumption +/- 5%	Current Consumption +/-5%	Gas Flow Rate +/- 5%	Efficiency +/-7%		
	(°C)	(kcal/h)	(W)				(Btu/h)	(W)	(A)
0	1.678	1.952	6.660	1.110	5,57	-	1,51	1,76	6,00
5	2.103	2.446	8.345	1.247	5,95	-	1,69	1,96	6,69
10	2.587	3.008	10.264	1.352	6,25	-	1,91	2,23	7,59
15	3.129	3.639	12.418	1.425	6,47	-	2,20	2,55	8,71

Dimensions

Rubber Grommet

Engineering Code	13146411
Dimensions	mm (Inch)

The grommets are made of special rubber and used in the nut and bolt type or in the snap on type assembly. The rubber grommet, the dimensions of which are shown in the figure below, was developed for installation in compressors with 16 and 19 mm diameters holes in the base plate.



Accessories