

Compressor Technical Data

Model: EMT6144Z

Code: 194PA67

Description

Refrigerant:	R-134a	Displacement (cm ³):	5,19
Voltage:	220-240 V 50 Hz 1 ~	Lubricant Type:	ISO22
Frequency (Hz):	50	Lubricant Charge (ml):	180
Application:	HBP	Motor Type:	CSIR
HP:	1/5	Starting Torque:	HST
Efficiency:	8,86	Type of Test:	ASHRAE46
Capacity:	1968,00		

Approval

VDE

Data

External Features

	Shape	Material	Diameter (mm)
Suction Connector	Slanted 42°	Copper	6,10
Discharge Connector	Straight	Copper	4,86
Process Connector	Slanted 42°	Copper	6,10

Oil Cooler:	
Base Plate:	European Standard
Tray Holder:	No
Weight (kg):	7,80

Application

Maximum ambient temperature (°C):	43
Expansion device:	Capillary/ Valve
Cooling:	Fan Cooling
Air flow rate:	

Mechanical Data

Bill of materials:	194PA67
Starting torque:	High Starting Torque
Bore (mm):	21,00
Stroke (mm):	7,50
Weight (kg):	7,80

Electrical Data

Motor type:	CSIR
Winding Resistance (25°C) - Start:	0,00
Winding Resistance (25°C) - Run:	0,00

Check Point - Condensing Temperature 54,4 °C

Evaporating Temperature	Cooling Capacity			Power Consumption +/- 5%	Current Consumption +/-5%	Efficiency +/-7%		
	(°C)	(kcal/h)	(W)			(Btu/h)	(W)	(A)
7,2	499	580	1.980	221	1,38	2,26	2,62	8,95

Condensing Temperature 35 °C

Evaporating Temperature	Cooling Capacity			Power Consumption +/- 5%	Current Consumption +/-5%	Gas Flow Rate +/- 5%	Efficiency +/-7%		
	(°C)	(kcal/h)	(W)				(Btu/h)	(W)	(A)
-15	248	289	986	131	1,08	5,33	1,90	2,21	7,53
-10	313	364	1.242	142	1,11	6,74	2,20	2,56	8,74
-5	389	452	1.542	154	1,14	8,40	2,53	2,94	10,04
0	476	554	1.890	165	1,17	10,34	2,88	3,35	11,45
5	577	671	2.288	176	1,21	12,59	3,27	3,80	12,98
10	690	803	2.740	187	1,24	15,17	3,70	4,30	14,67

Condensing Temperature 45 °C

Evaporating Temperature	Cooling Capacity			Power Consumption +/- 5%	Current Consumption +/-5%	Gas Flow Rate +/- 5%	Efficiency +/-7%		
	(°C)	(kcal/h)	(W)				(Btu/h)	(W)	(A)
-15	218	253	863	140	1,10	5,04	1,56	1,81	6,17
-10	276	321	1.094	153	1,14	6,42	1,80	2,09	7,14
-5	345	401	1.367	167	1,18	8,05	2,06	2,40	8,19
0	425	494	1.685	181	1,22	9,97	2,35	2,73	9,31
5	517	601	2.052	195	1,27	12,21	2,65	3,09	10,53
10	622	724	2.469	208	1,31	14,80	2,99	3,48	11,86

Condensing Temperature 55 °C

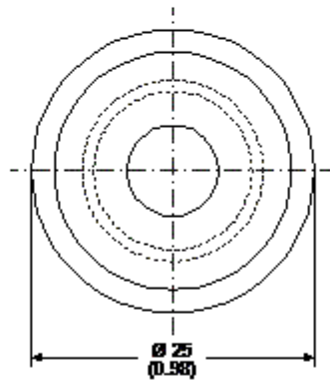
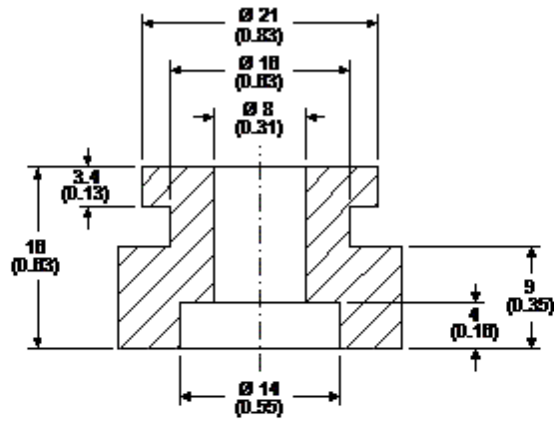
Evaporating Temperature	Cooling Capacity			Power Consumption +/- 5%	Current Consumption +/-5%	Gas Flow Rate +/- 5%	Efficiency +/-7%		
	(°C)	(kcal/h)	(W)				(Btu/h)	(W)	(A)
-15	188	219	746	148	1,12	4,75	1,27	1,48	5,04
-10	239	278	948	164	1,18	6,06	1,46	1,69	5,78
-5	300	348	1.189	181	1,24	7,64	1,66	1,93	6,57
0	371	432	1.473	198	1,30	9,52	1,87	2,18	7,44
5	454	528	1.803	215	1,36	11,72	2,11	2,46	8,38
10	550	639	2.182	232	1,43	14,29	2,37	2,76	9,41

Dimensions

Rubber Grommet

Engineering Code	13146411
Dimensions	mm (Inch)

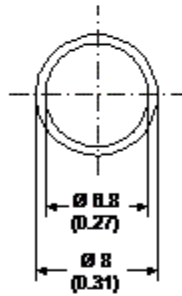
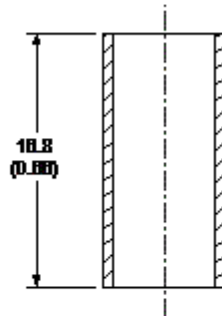
The grommets are made of special rubber and used in the nut and bolt type or in the snap on type assembly. The rubber grommet, the dimensions of which are shown in the figure below, was developed for installation in compressors with 16 and 19 mm diameters holes in the base plate.



Metal Bushing

Engineering Code	13126755
Dimensions	mm (Inch)

As an optional assembly accessory, Embraco can supply metal bushings, the purpose of which is to limit tightening of the screws upon attachment of the compressor assembly to the refrigeration system. This bushing is made of steel in the dimensions shown in the figure below, and comes with an anti-rust coating of chromated zinc.



Accessories