

Compressor Technical Data

Model: NT6224U

Code: 842CA04

Description

Refrigerant:	R-290	Displacement (cm ³):	22,37
Voltage:	220-240 V 50 Hz 1 ~	Lubricant Type:	ISO22
Frequency (Hz):	50	Lubricant Charge (ml):	450
Application:	MBP	Motor Type:	CSCR
HP:	1	Starting Torque:	HST
Efficiency:	9,33	Type of Test:	ASHRAE46
Capacity:	9702,00		

Approval

VDE

Data

External Features

	Shape	Material	Diameter (mm)
Suction Connector	Vertical	Copper	9,60
Discharge Connector	Vertical	Copper	6,42
Process Connector	Vertical	Copper	6,42

Oil Cooler:	
Base Plate:	Universal
Tray Holder:	No
Weight (kg):	17,20

Application

Maximum ambient temperature (°C):	43
Expansion device:	Capillary/ Valve
Cooling:	Fan Cooling
Air flow rate:	

Mechanical Data

Bill of materials:	842CA04
Starting torque:	High Starting Torque
Bore (mm):	36,99
Stroke (mm):	10,42
Weight (kg):	17,20

Electrical Data

Motor type:	CSCR
Winding Resistance (25°C) - Start:	2,30
Winding Resistance (25°C) - Run:	8,80

Check Point - Condensing Temperature 54,4 °C

Evaporating Temperature	Cooling Capacity			Power Consumption +/- 5%	Current Consumption +/-5%	Efficiency +/-7%		
	(°C)	(kcal/h)	(W)			(Btu/h)	(W)	(A)
7,2	2.448	2.847	9.713	1.031	4,65	2,37	2,76	9,42

Condensing Temperature 35 °C

Evaporating Temperature	Cooling Capacity			Power Consumption +/- 5%	Current Consumption +/-5%	Gas Flow Rate +/- 5%	Efficiency +/-7%		
	(°C)	(kcal/h)	(W)				(Btu/h)	(W)	(A)
-20	1.073	1.248	4.257	573	2,64	-	1,87	2,18	7,43
-15	1.382	1.607	5.483	624	2,86	-	2,21	2,57	8,79
-10	1.728	2.009	6.856	670	3,06	-	2,58	3,00	10,23
-5	2.108	2.452	8.365	712	3,25	-	2,96	3,44	11,74
0	2.520	2.930	9.999	752	3,44	-	3,35	3,90	13,30
5	2.960	3.442	11.746	789	3,61	-	3,75	4,36	14,89
10	3.426	3.984	13.594	825	3,77	-	4,15	4,83	16,48

Condensing Temperature 45 °C

Evaporating Temperature	Cooling Capacity			Power Consumption +/- 5%	Current Consumption +/-5%	Gas Flow Rate +/- 5%	Efficiency +/-7%		
	(°C)	(kcal/h)	(W)				(Btu/h)	(W)	(A)
-20	907	1.055	3.601	615	2,84	-	1,48	1,72	5,86
-15	1.164	1.353	4.618	679	3,12	-	1,71	1,99	6,80
-10	1.464	1.703	5.809	737	3,38	-	1,99	2,31	7,88
-5	1.806	2.100	7.165	792	3,62	-	2,28	2,65	9,04
0	2.186	2.542	8.673	844	3,84	-	2,59	3,01	10,27
5	2.601	3.025	10.322	894	4,05	-	2,91	3,38	11,55
10	3.049	3.546	12.100	943	4,24	-	3,23	3,76	12,84

Condensing Temperature 55 °C

Evaporating Temperature	Cooling Capacity			Power Consumption +/- 5%	Current Consumption +/-5%	Gas Flow Rate +/- 5%	Efficiency +/-7%		
	(°C)	(kcal/h)	(W)				(Btu/h)	(W)	(A)
-20	774	901	3.073	646	2,94	-	1,20	1,39	4,76

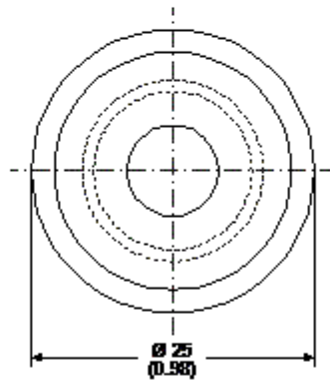
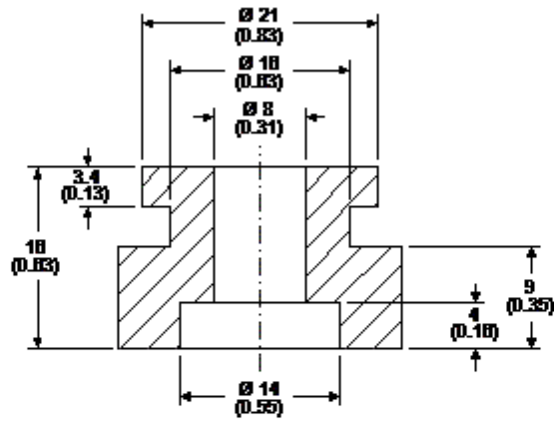
-15	972	1.13 0	3.856	727	3,32	-	1,34	1,55	5,30
-10	1.220	1.41 9	4.842	803	3,67	-	1,52	1,77	6,03
-5	1.517	1.76 4	6.019	875	4,00	-	1,73	2,02	6,88
0	1.859	2.16 2	7.377	943	4,30	-	1,97	2,29	7,82
5	2.244	2.60 9	8.903	1.010	4,57	-	2,22	2,58	8,82
10	2.668	3.10 3	10.587	1.075	4,83	-	2,48	2,89	9,84

Dimensions

Rubber Grommet

Engineering Code	13146411
Dimensions	mm (Inch)

The grommets are made of special rubber and used in the nut and bolt type or in the snap on type assembly. The rubber grommet, the dimensions of which are shown in the figure below, was developed for installation in compressors with 16 and 19 mm diameters holes in the base plate.



Accessories