

# TelevisGo

Remote maintenance and monitoring via web



**ENVIRONMENTALLY  
OPTIMISED**



MANAGEMENT AND MONITORING



- Compact and ready-to-use system with pre-loaded software
- Intuitive user interface on web pages
- HACCP temperature and operational status recording
- Alarm management can be configured by time band and recipient
- Customisable graphics displaying data in real time
- Open protocol for integration with third-party software



invenSys™

## A SCALEABLE SOLUTION

Televis**Go** is a device for the monitoring, control and remote management of commercial refrigeration installations: supermarkets, small businesses, warehouses, restaurants, catering companies and food processing and storage centres.

It can be used to record **temperatures as per HACCP requirements**, and **to provide notification of operating faults** via email, SMS or local indications by means of warning lights or sounds.

The system is accessed through **web navigation**. The information is organised in a clear and easily accessible manner, in the form of graphic layouts, tables and charts for quick and instant reading.

The information can also be printed and exported or sent regularly via email.

The system can be used **to control all operating parameters** of the installation (both on site and remotely), to provide useful diagnostics information (temperatures, statuses, working pressure values, energy consumption, etc.) and to optimise operation.

The connectivity required for alarm signalling and remote procedures can be achieved via LAN/WAN, DSL and modem connections, and via GSM for the direct transmission of SMS messages.

Through web configuration pages, it offers a simple and complete solution for the **automation of repetitive activities**, such as switching installation lights on/off, and for directly setting controllers (changing seasonal settings, implementing actions in the event of faults, etc.).

Televis**Go is an open system**, it automatically recognises Eliwell controllers and allows easy integration of third-party measuring and control devices equipped with modbus protocol, without the use of additional interfaces.

The **open protocol Data Transfer XML** allows data exchange via TCP/IP (e.g. with Web servers) for the centralisation of information. It also allows remote adjustment of installation control parameters, optimising their management with automatic systems.

## A COMPLETE AND RELIABLE SYSTEM

## For the end user

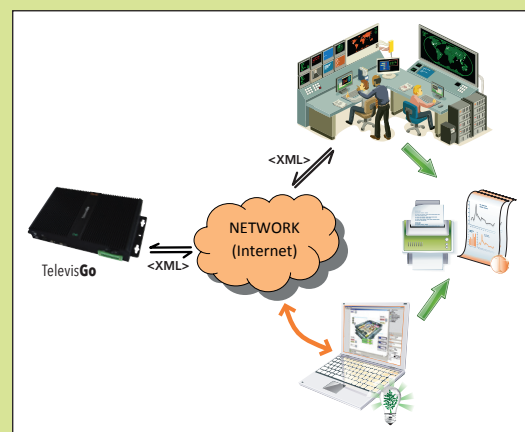
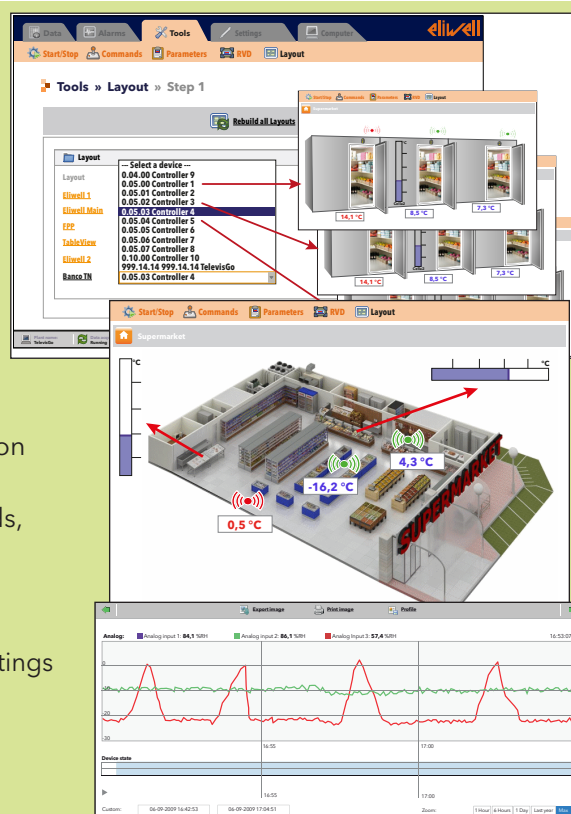
- complete and easy-to-use system
- HACCP temperature recording
- customisable graphics displaying data in real time
- automatic printing of reports containing values read from the network
- energy consumption information
- open and expandable system

### For the maintenance technician

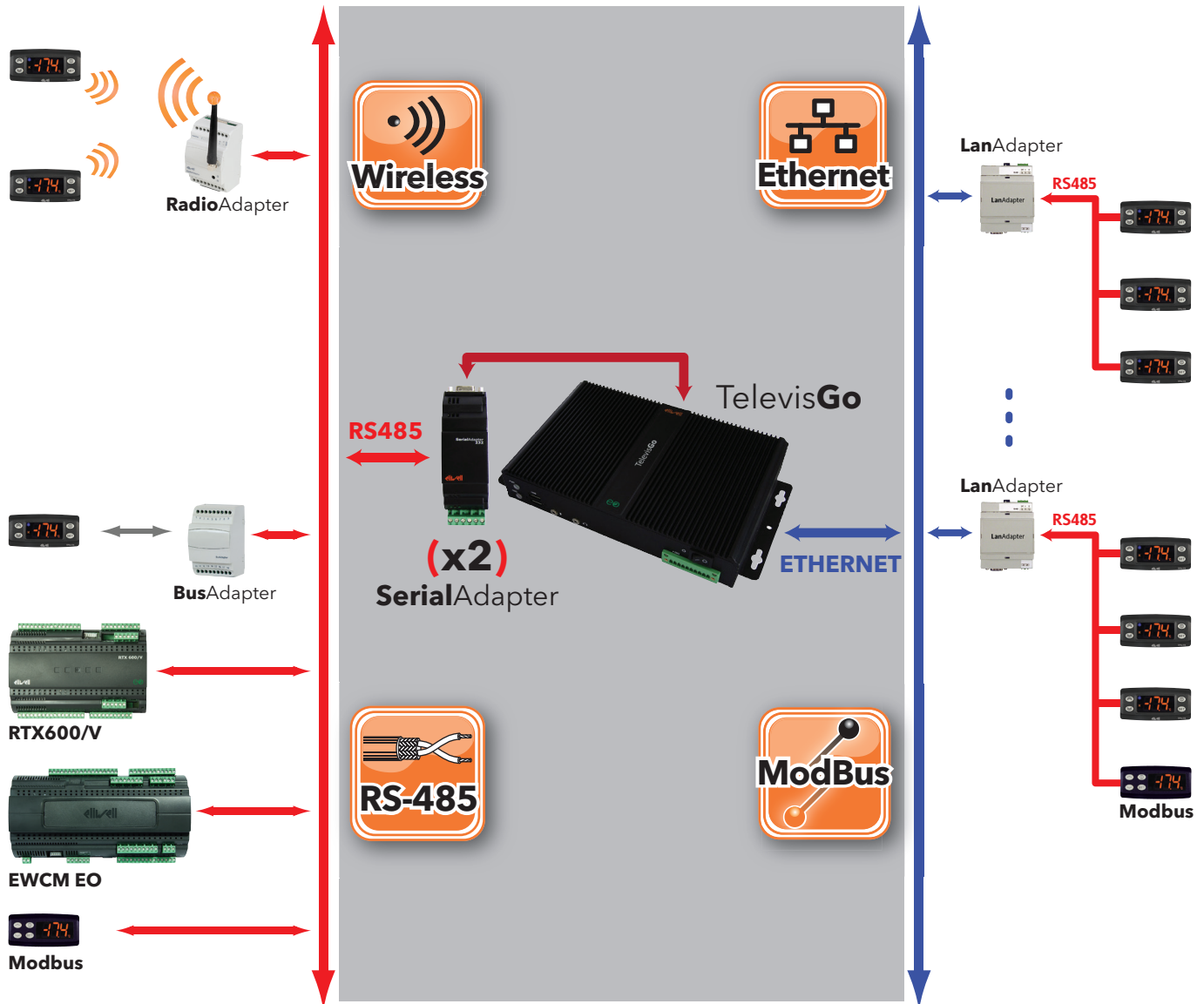
- compact, reliable and ready-to-use system
- easy learning procedure and intuitive user interface
- alarm signalling via email and SMS, with priority configuration
- remote web access for diagnostics and control
- special maintenance devices: device parameters, commands, detailed diagnostics and recording of all operating statuses
- complete remote system updating via web: software, languages, controller drivers)
- devices for custom configuration and quick modification of settings

## For chains and system integrators

- solution can be scaled to suit the size of the installation
- devices for custom configuration, cloning of installations and configuration modification in series
- compatibility with third-party modbus devices: meters for energy or HVAC controls
- open XML protocol:
  - regular data transmission (push function)
  - transmission of data and alarms as they occur
  - real-time data acquisition
  - querying of data and alarm history
  - execution of commands / modification of controller parameters remotely
  - Integrated SOCKS protocol for routing of TCP and UDP communication



## TELEVIS - FLEXIBLE CONNECTIVITY



## TECHNICAL DATA

### FEATURES

RS-485 galvanically isolated field bus

#### NOTE:

the TelevisGo can control up to 2 **SerialAdapters**, of which one is supplied and the other optional

Field bus with ETHERNET/RS485 adapter (**LanAdapter**)

Maximum number of devices managed

Integrated and applied web server, accessible via web pages

User interface languages (pre-loaded onto the device)

Software upgrades by means of USB pen drive and via WEB

Open XML protocol

Power supply

Max. power absorbed

LAN: Ethernet RJ45 port

VGA output + PS2/USB for mouse and keyboard optional

2

Max. 10

30 / 60 / 224  
Depending on model

YES

IT-EN-ES-DE-FR

YES

YES

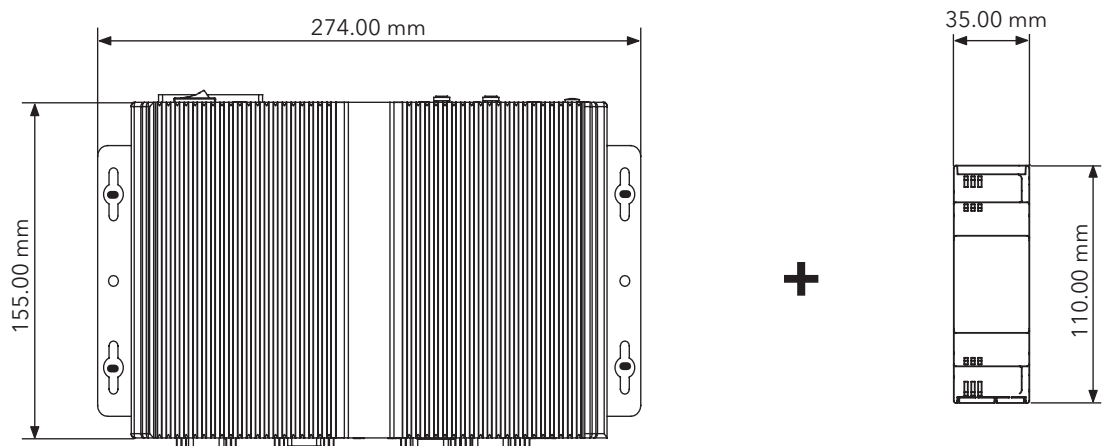
12 V<sub>DC</sub> with external  
100-240 V power  
supply unit~ ±10%

10 VA

1

YES







## MOUNTING - DIMENSIONS



Televis**Go**

**SerialAdapter**

## ACCESSORIES

	<b>SerialAdapter:</b> RS-232 / RS-485 galvanically isolated adapter for Televis <b>Go</b> .
	<b>LanAdapter / Wifi LanAdapter:</b> galvanically isolated interface for additional RS-485 field bus devices via Ethernet or WiFi network.
	<b>RadioAdapter:</b> wireless mesh field bus for Televis and modbus controllers.
	<b>BusAdapter:</b> RS-485/TTL galvanically isolated adapter for Eliwell controllers not equipped with a serial port.
	<b>Belden AWG20</b> cable: specific cable for RS-485 networks.
	<b>GSM</b> modem: GSM/GPRS modem for the transmission of SMS messages and backup connectivity.

### ELIWELL CONTROLS srl

Via dell' Industria, 15 Z.I. Paludi  
32010 Pieve d' Alpago (BL) - ITALY -  
Telephone: +39 0437 986 111  
Facsimile: +39 0437 989 066

[www.eliwell.com](http://www.eliwell.com)

#### Sales:

Telephone: +39 0437 986 100 (Italy)  
+39 0437 986 200 (other countries)  
E-mail: [saleseliwell@invensys.com](mailto:saleseliwell@invensys.com)

#### Technical Support:

Telephone: +39 0437 986 300  
E-mail: [techsuppeliwell@invensys.com](mailto:techsuppeliwell@invensys.com)



CT123165 • Televis**Go** • EN • rel. 06/13

© Eliwell Controls s.r.l. 2013 • All rights reserved.